An anatomical model of the human torso, showing the ribcage, muscles, and internal organs. The model is dark brown with white ribs and yellowish internal structures. The muscles are shown in a reddish-brown color. The model is positioned in a laboratory setting, with a computer monitor and keyboard visible in the background. An "EXIT" sign is visible on the wall behind the model.

Virtual Lab
Practical 2
Review Pictures
Muscles

Virtual Lab Practical 2

Review Pictures Muscles

Chapters Reviewed

Muscle Tissue and Organization

Axial Muscles

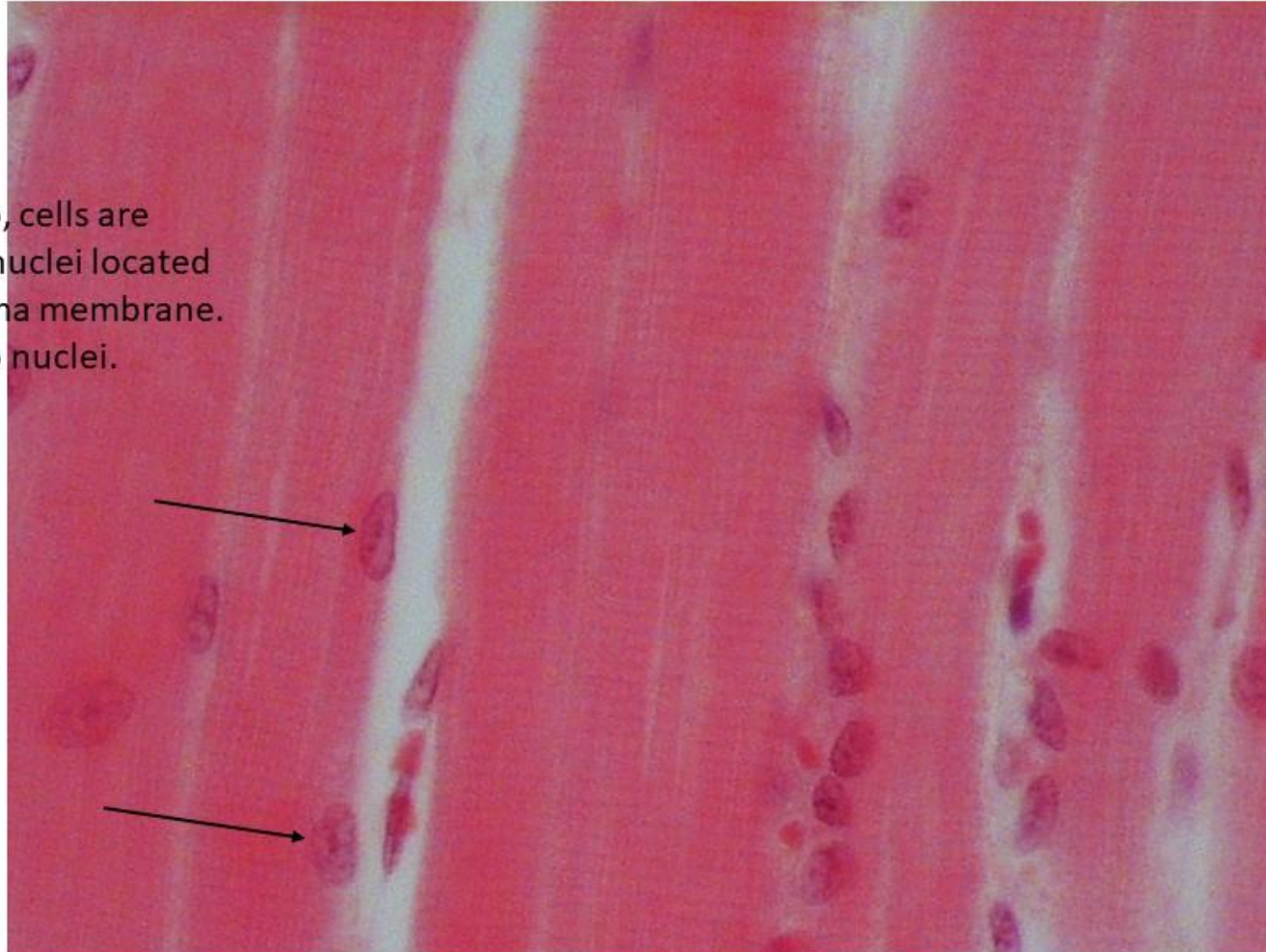
Appendicular Muscles

- Study the pictures of the labeled models and tissues as part of your online lab experience
- Be familiar with these pictures and each label. These pictures are used for your lab exam.
- Review Dr. Gannon's instructional videos posted in the lab e-book
- Remember to use the zoom function to increase or decrease the size of the image

Skeletal Muscle Tissue

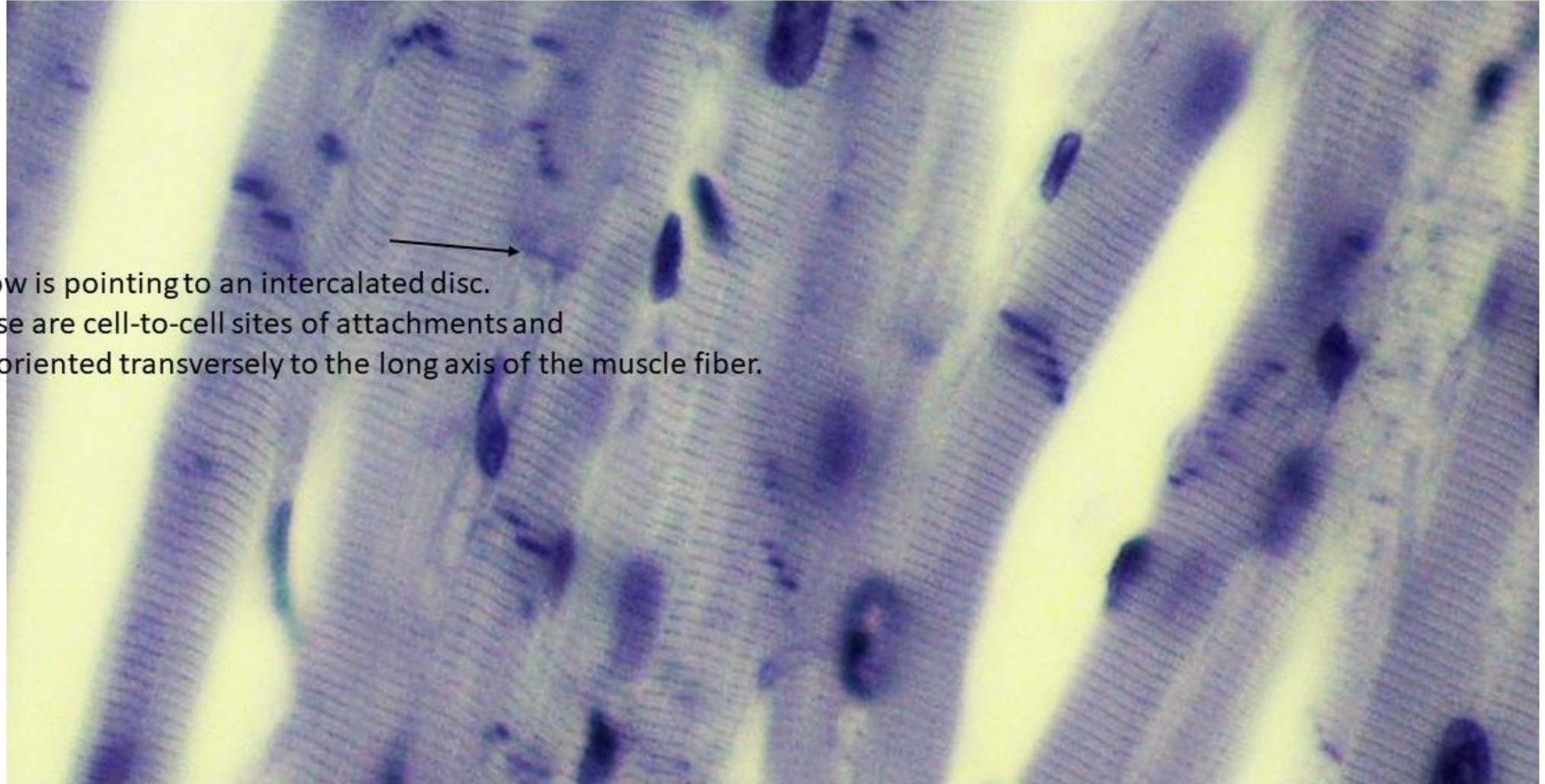
Skeletal Muscle Tissue-Longitudinal Section

Notice striations. Also, cells are multi-nucleated with nuclei located just beneath the plasma membrane. Arrows are pointing to nuclei.



Cardiac Muscle Tissue

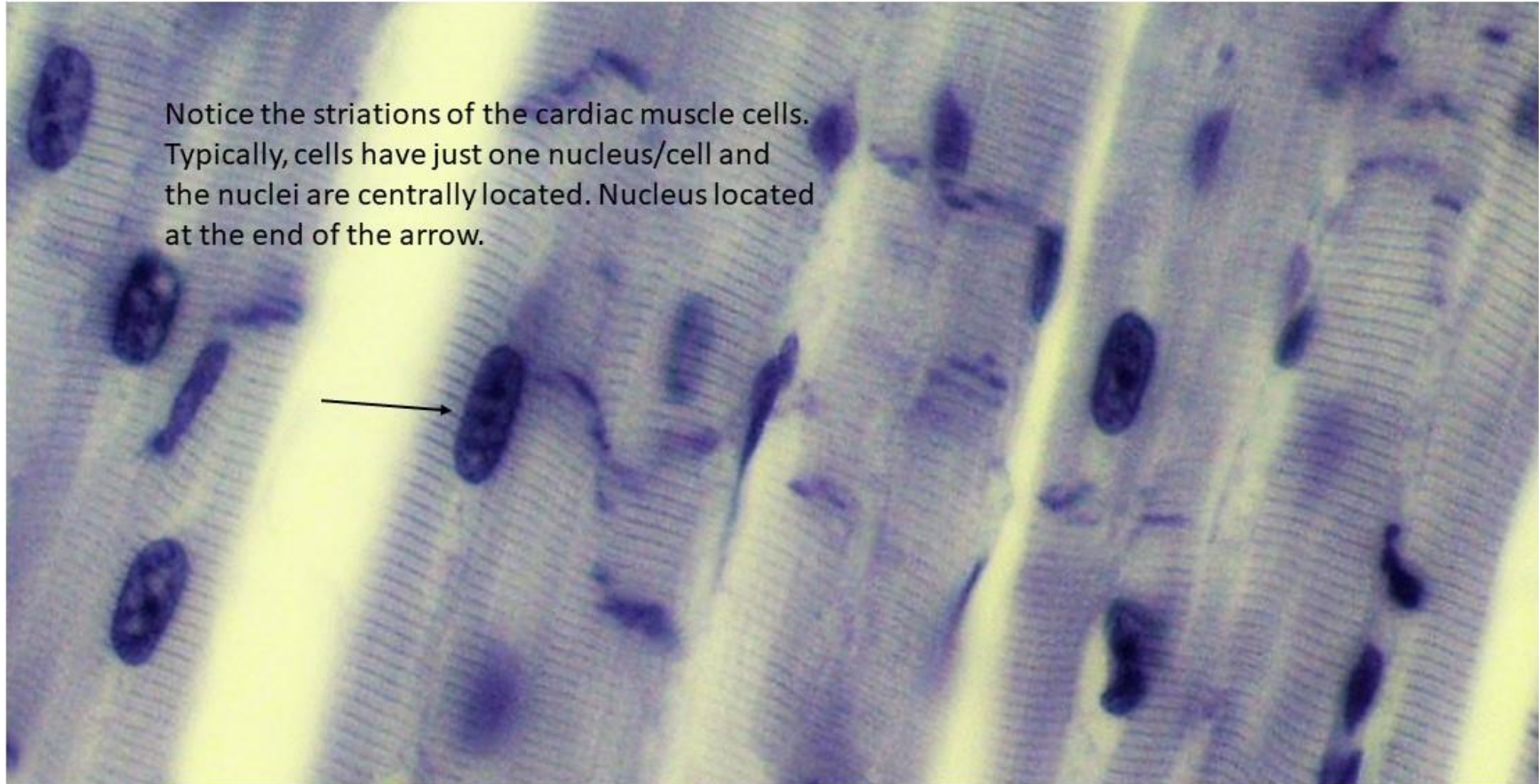
Cardiac Muscle Tissue-Longitudinal Section



Arrow is pointing to an intercalated disc.
These are cell-to-cell sites of attachments and
are oriented transversely to the long axis of the muscle fiber.

Cardiac Muscle Tissue

Cardiac Muscle Tissue-Longitudinal Section



Smooth Muscle Tissue

Smooth Muscle-Longitudinal Section

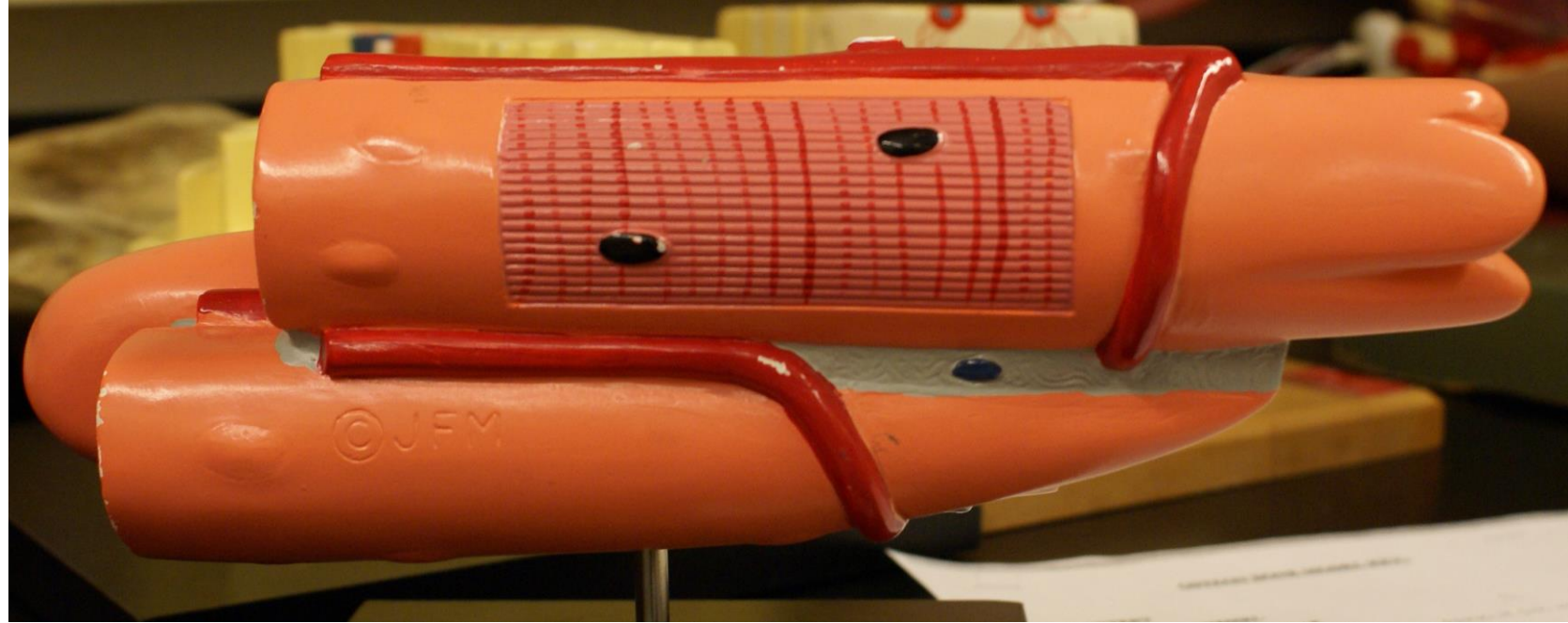


Smooth muscle cells are thicker in the middle and have tapering ends. The centrally located nuclei also appear elongated. Arrow pointing to sample nuclei. Unlike skeletal and cardiac muscle, smooth muscle is non-striated.

Skeletal Muscle Tissue Model

Characteristics

- Long, cylindrical cells
- Multi-nucleated fibers (cells)
- Striated



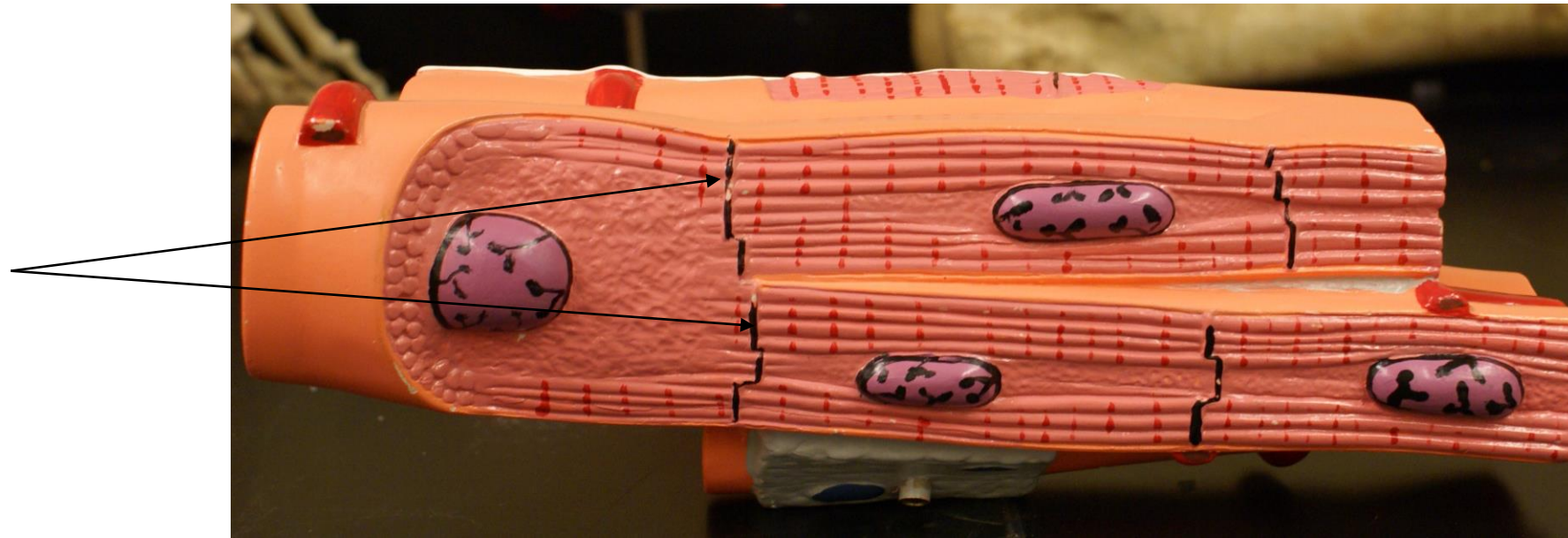
Cardiac Muscle Tissue Model

Characteristics

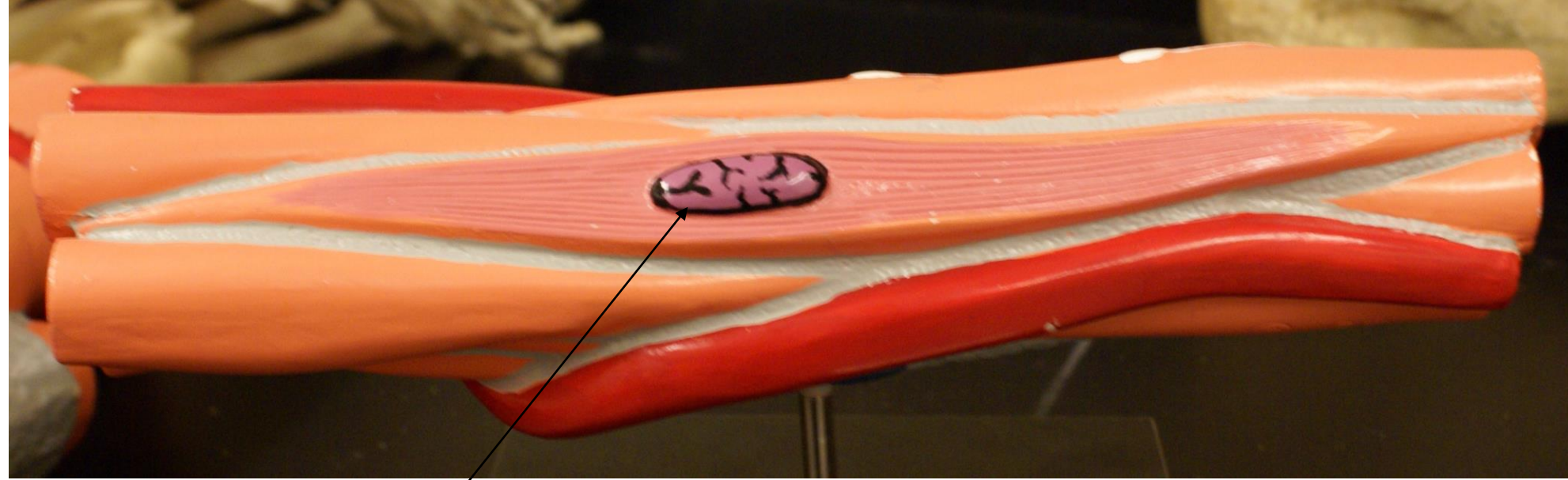
- Short-branched cells
- Centrally located nucleus
- Intercalated discs
- Striated



Intercalated Discs



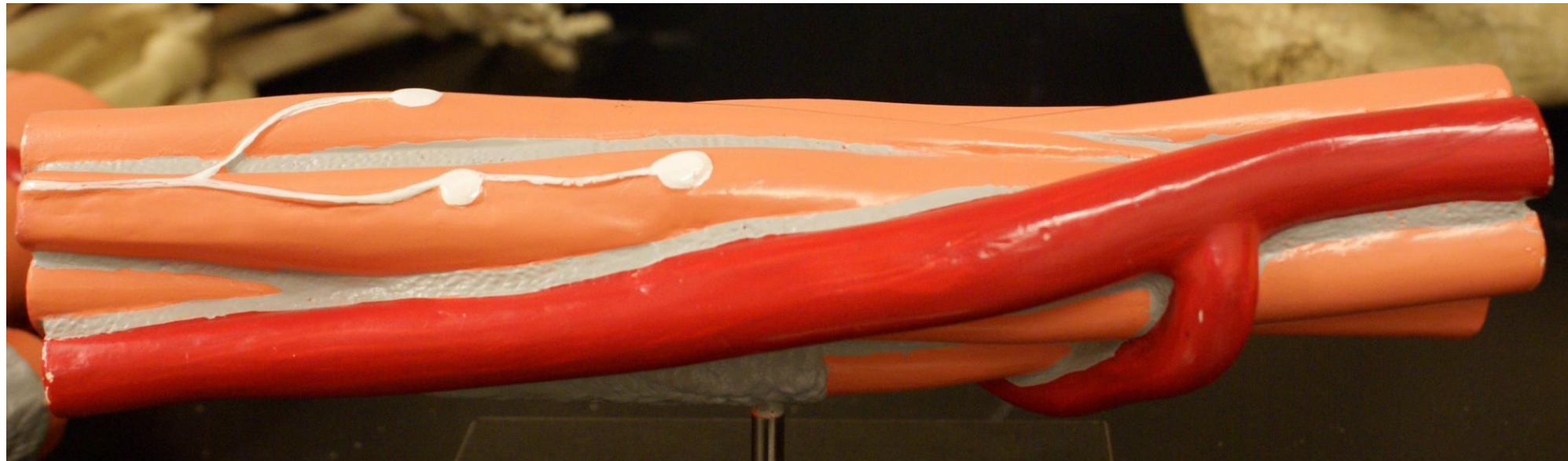
Smooth Muscle Tissue Model



Nucleus

Characteristics

- Spindle-shaped cells
- Nucleus is centrally located
- Non-striated



Epicranius:
Frontal belly

Orbicularis
Oculi

Masseter

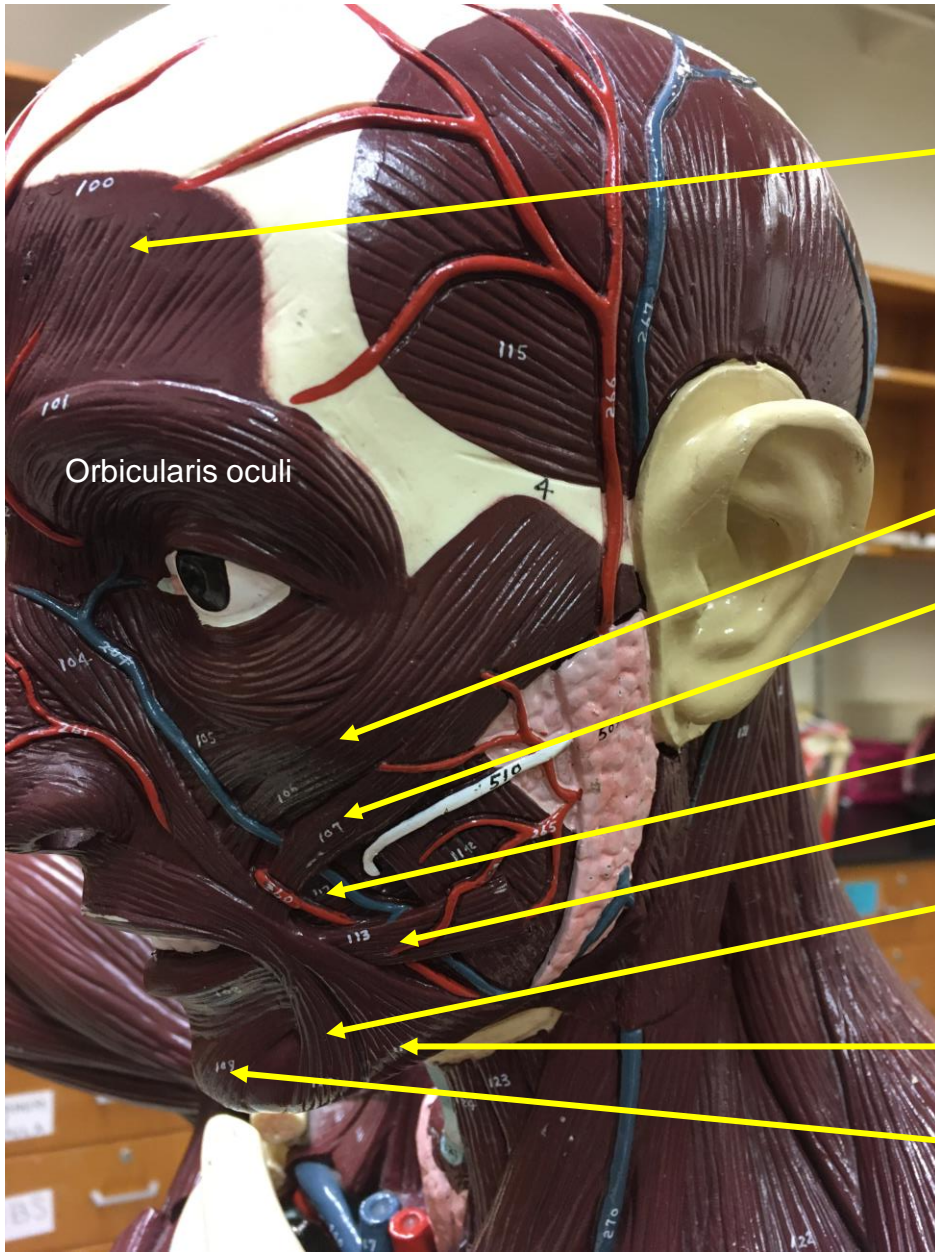
Depressor labii
inferioris

Sternocleidomastoid



Orbicularis
Oris

Mentalis is
cut here



Epicranius:
Frontal Belly

Temporalis

Zygomaticus minor

Zygomaticus major

Buccinator

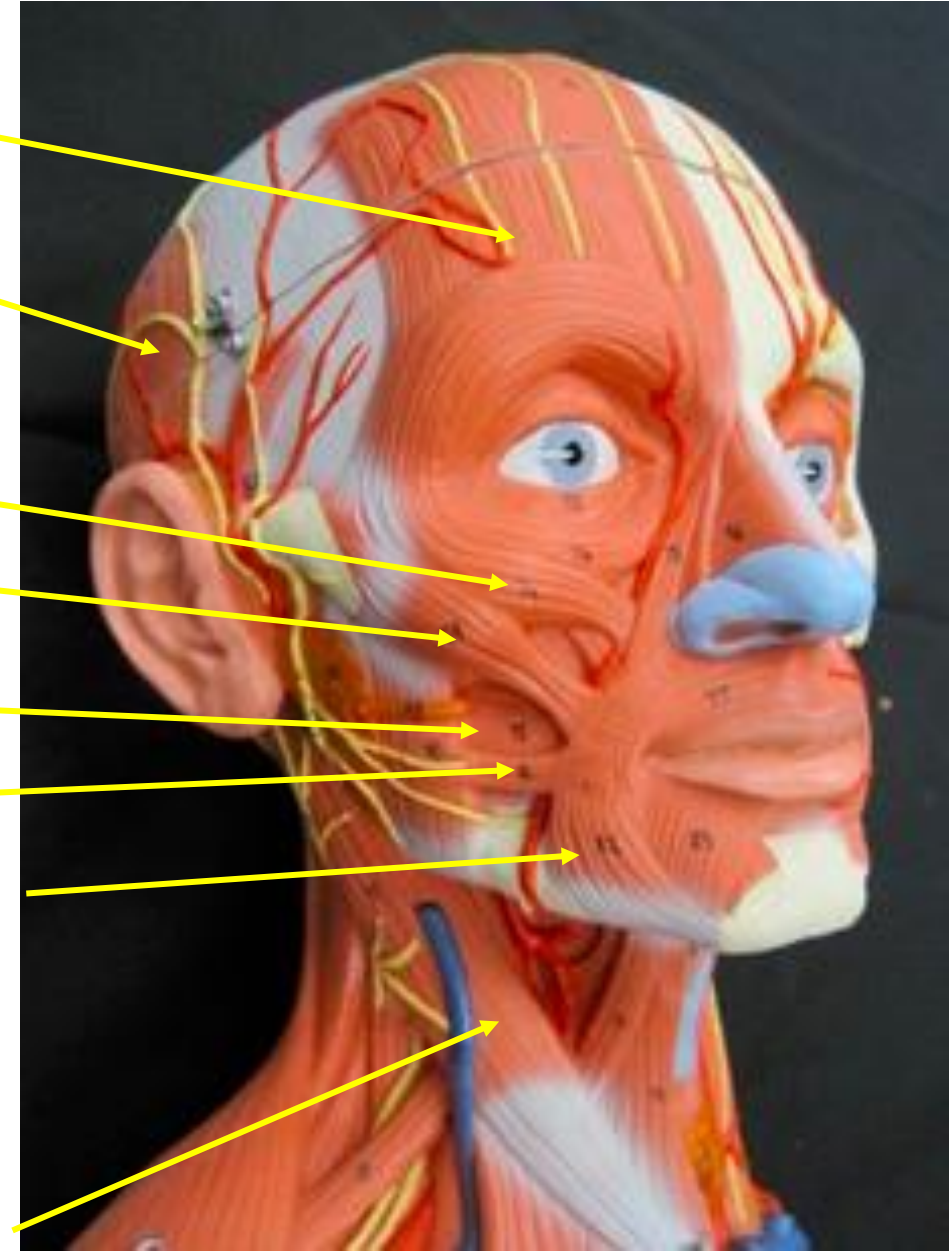
Risorius

Depressor anguli oris

Platysma

Mentalis

Sternocleidomastoid

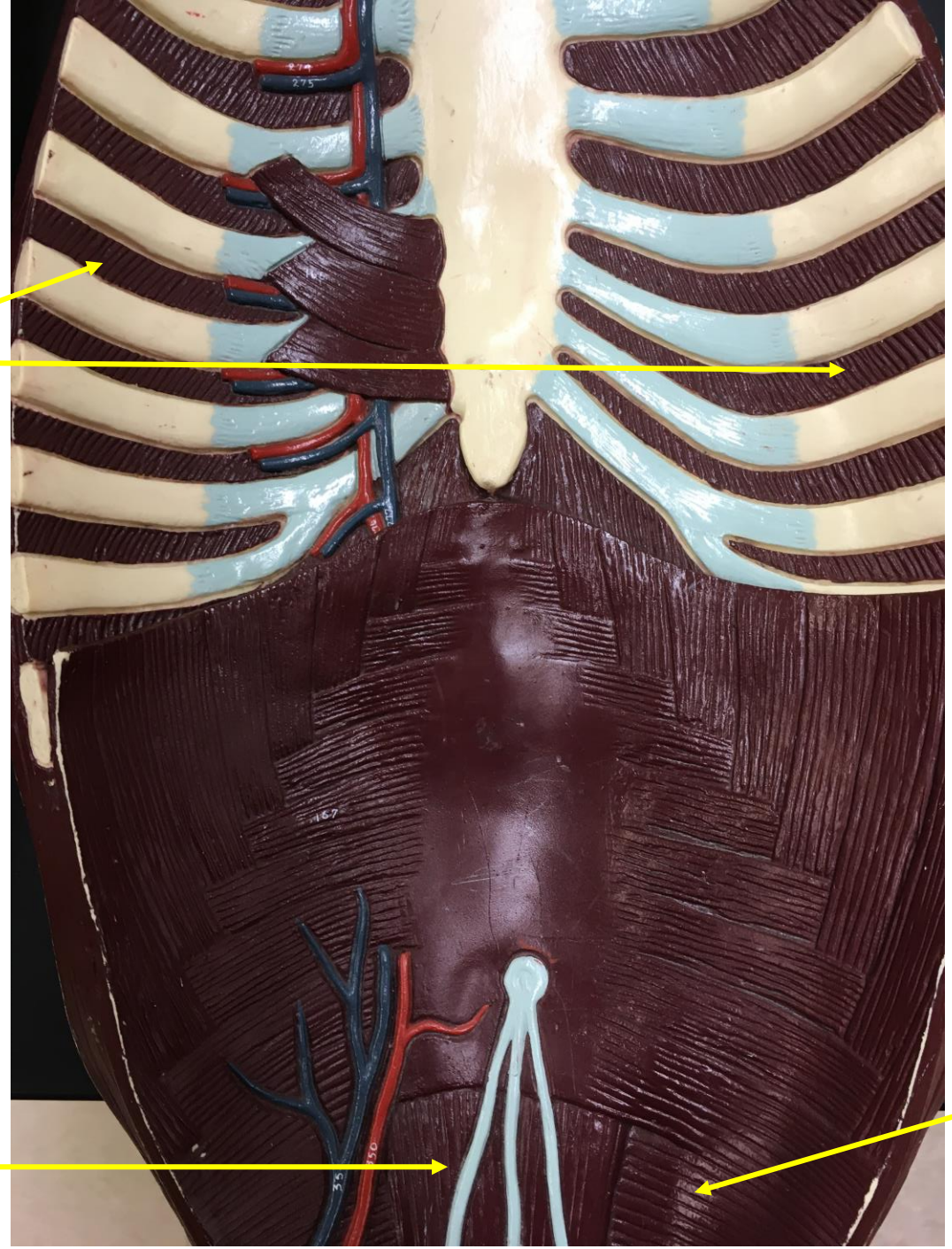


Abdominal Wall Muscles Internal View

Intercostals

Rectus
Abdominis

Transversus
Abdominis



Abdominal Wall Muscles Anterior View

Rectus
abdominis

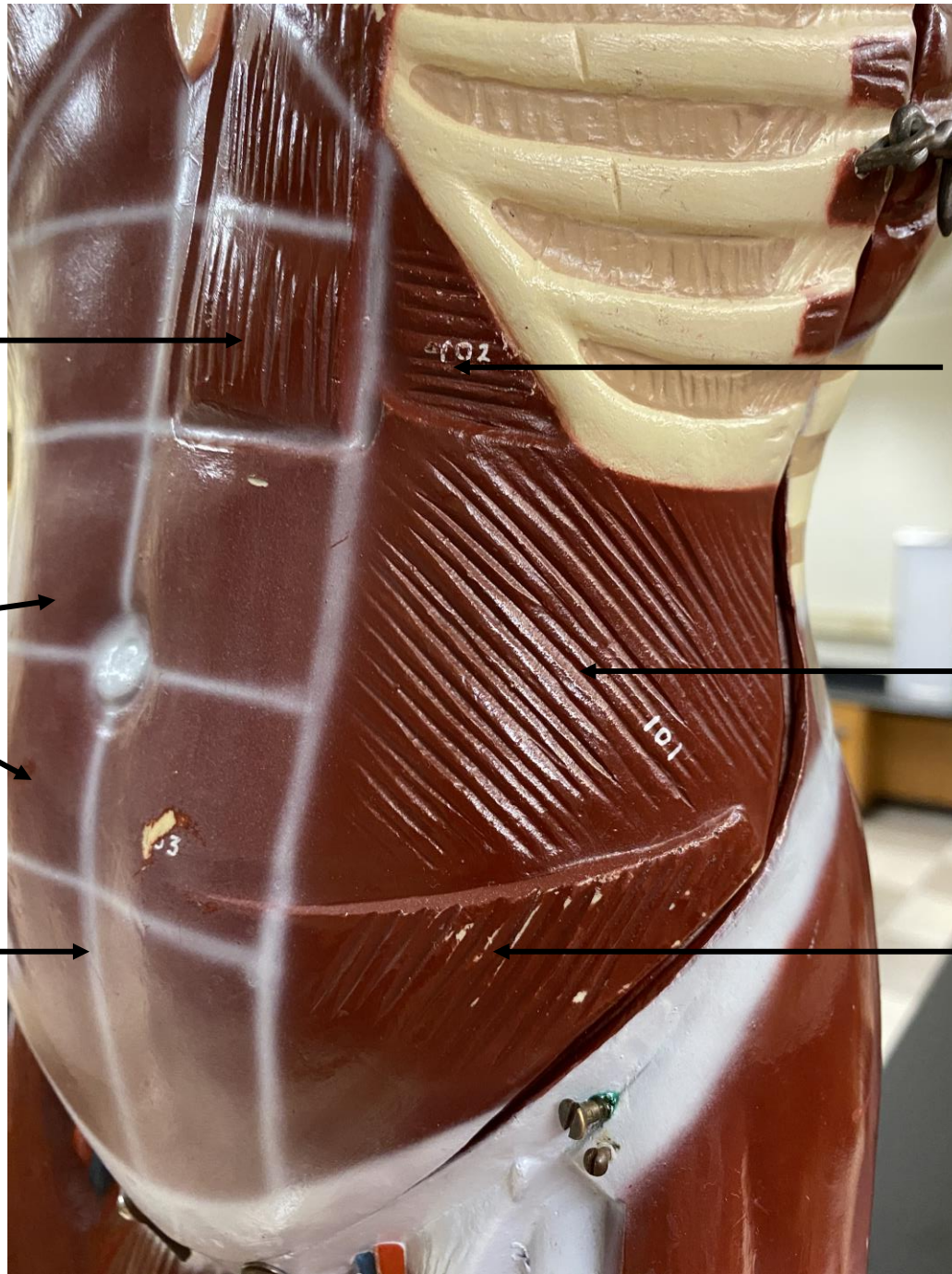
Transversus
abdominis

Rectus
Sheath
(White
tissue)

Internal
oblique

Linea
alba

External
oblique



Abdominal Wall

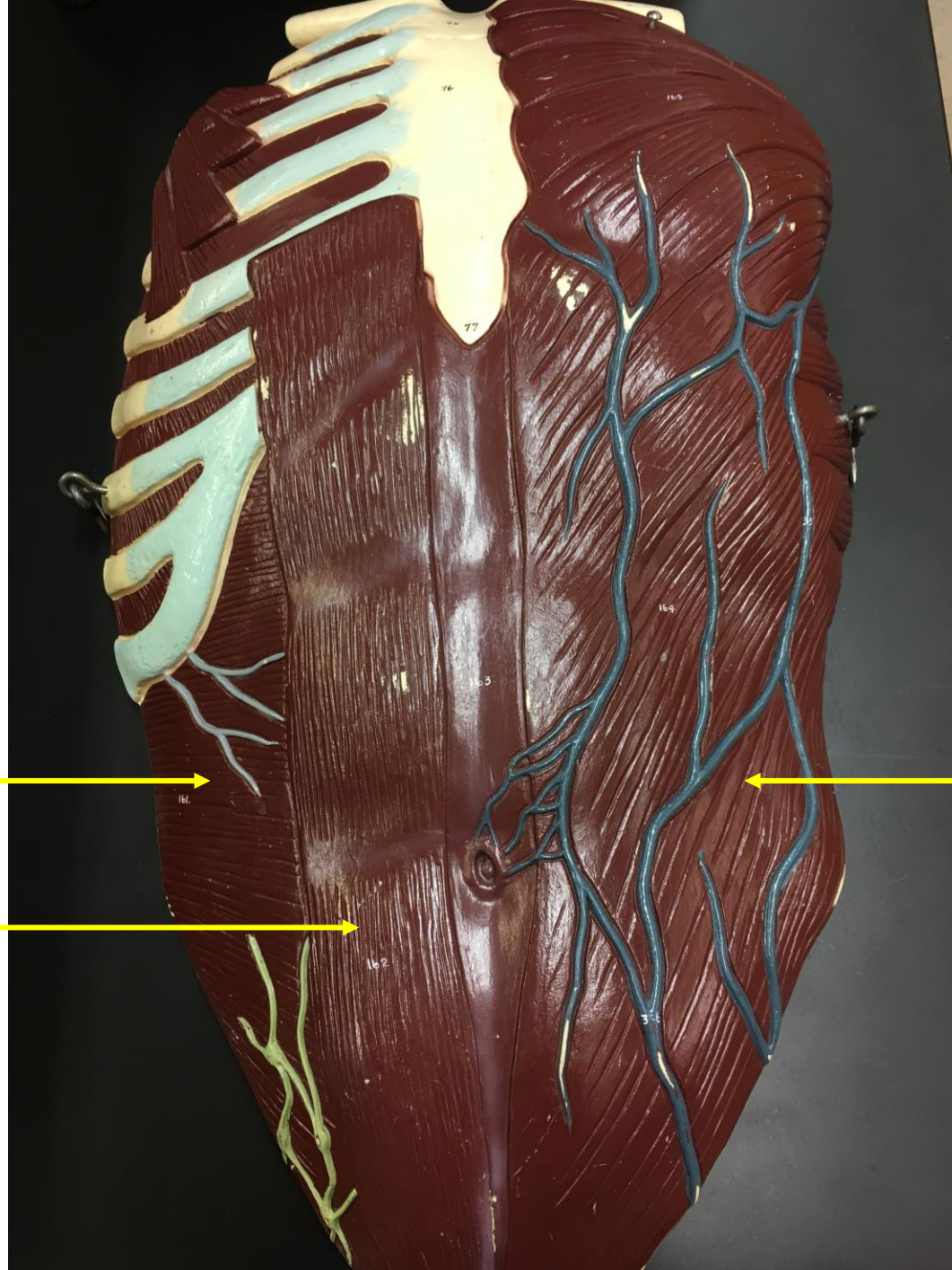
Muscles

Anterior View

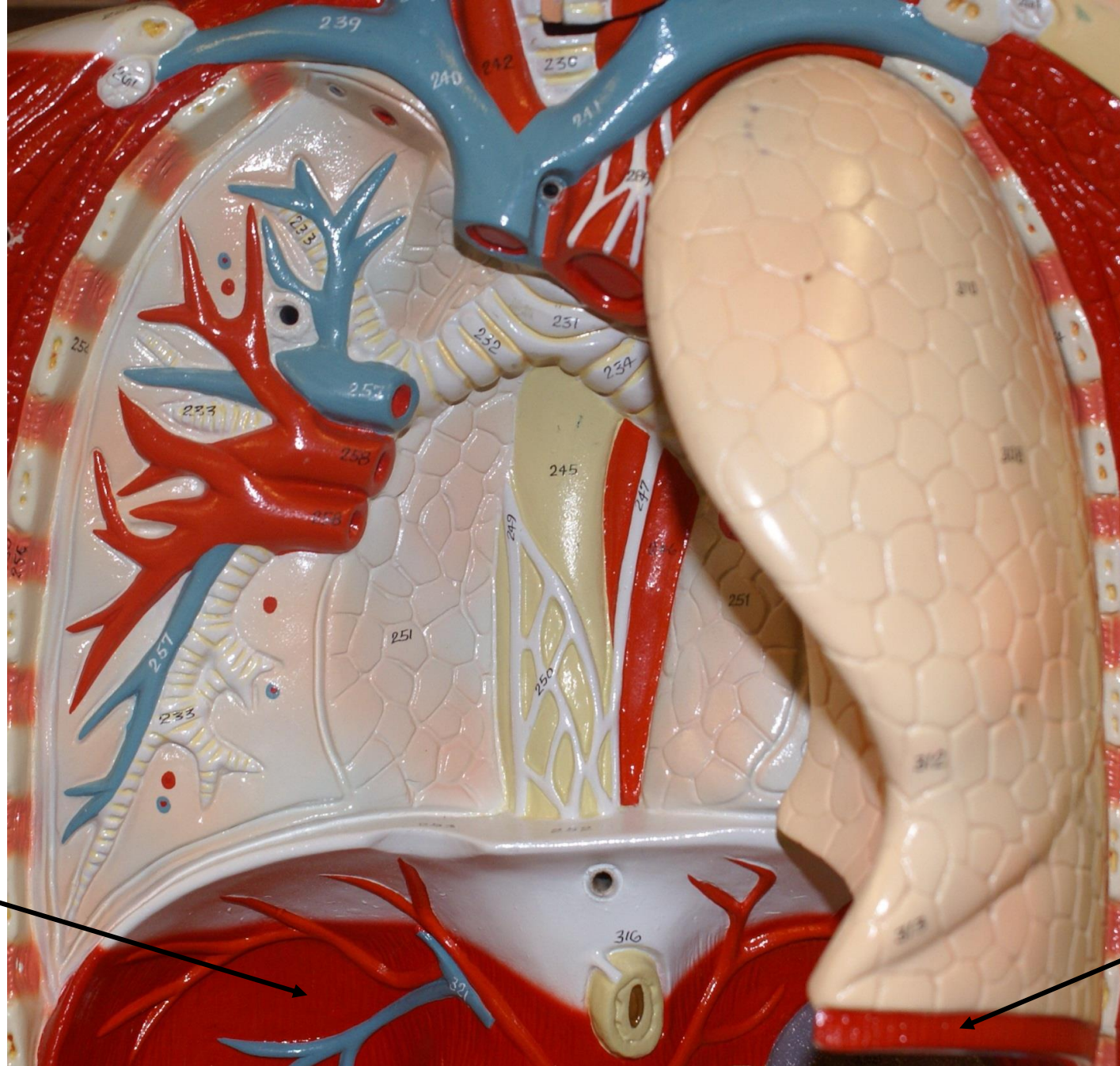
Transversus
abdominis

Rectus
abdominis

External
Oblique



Muscle of Respiration Diaphragm



Diaphragm



Diaphragm



External Intercostals

Internal Intercostals

Pectoralis Major

Linea alba

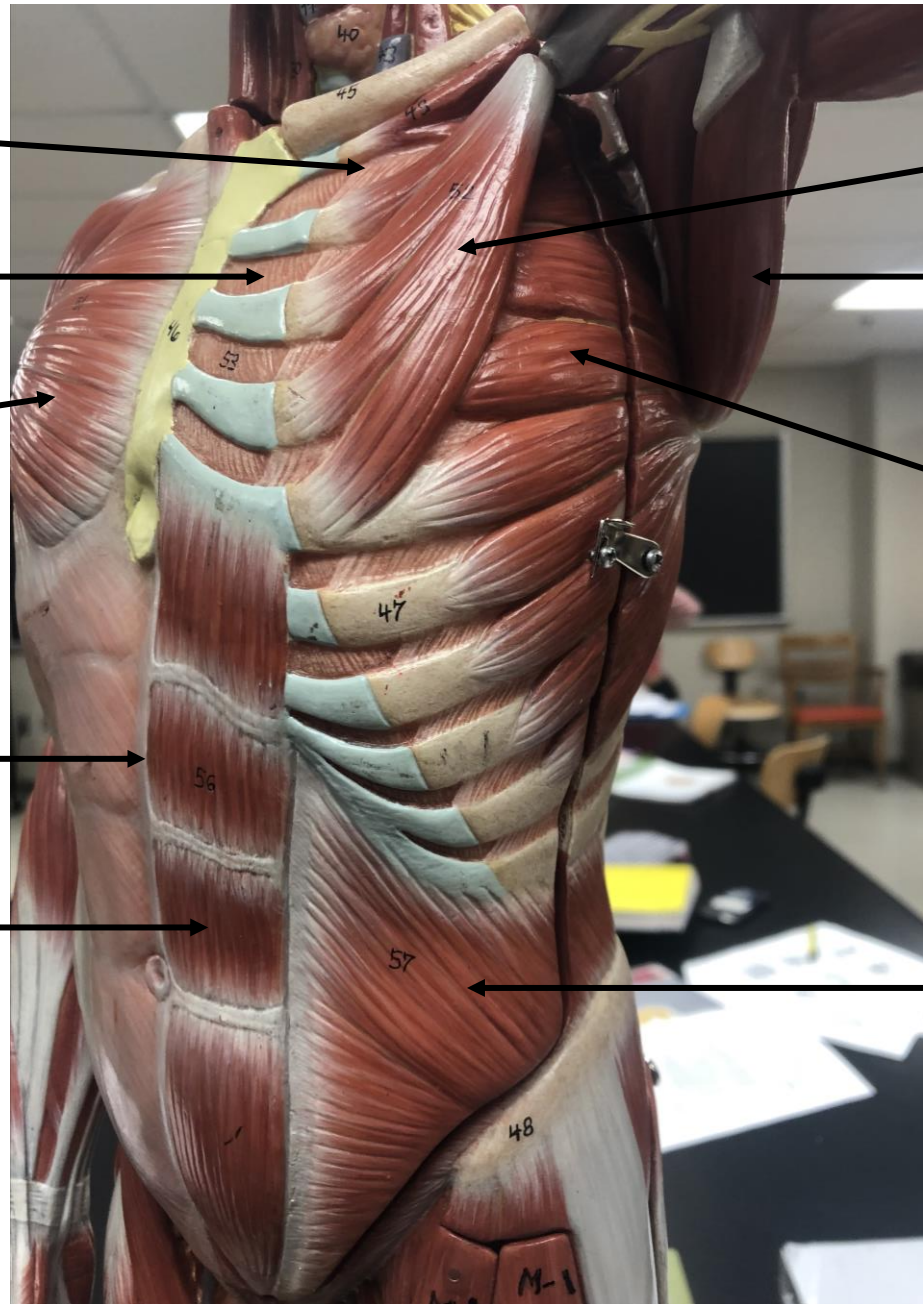
Rectus Abdominis

Pectoralis minor

Teres Major

Serratus Anterior

Internal Oblique



Sternocleidomastoid

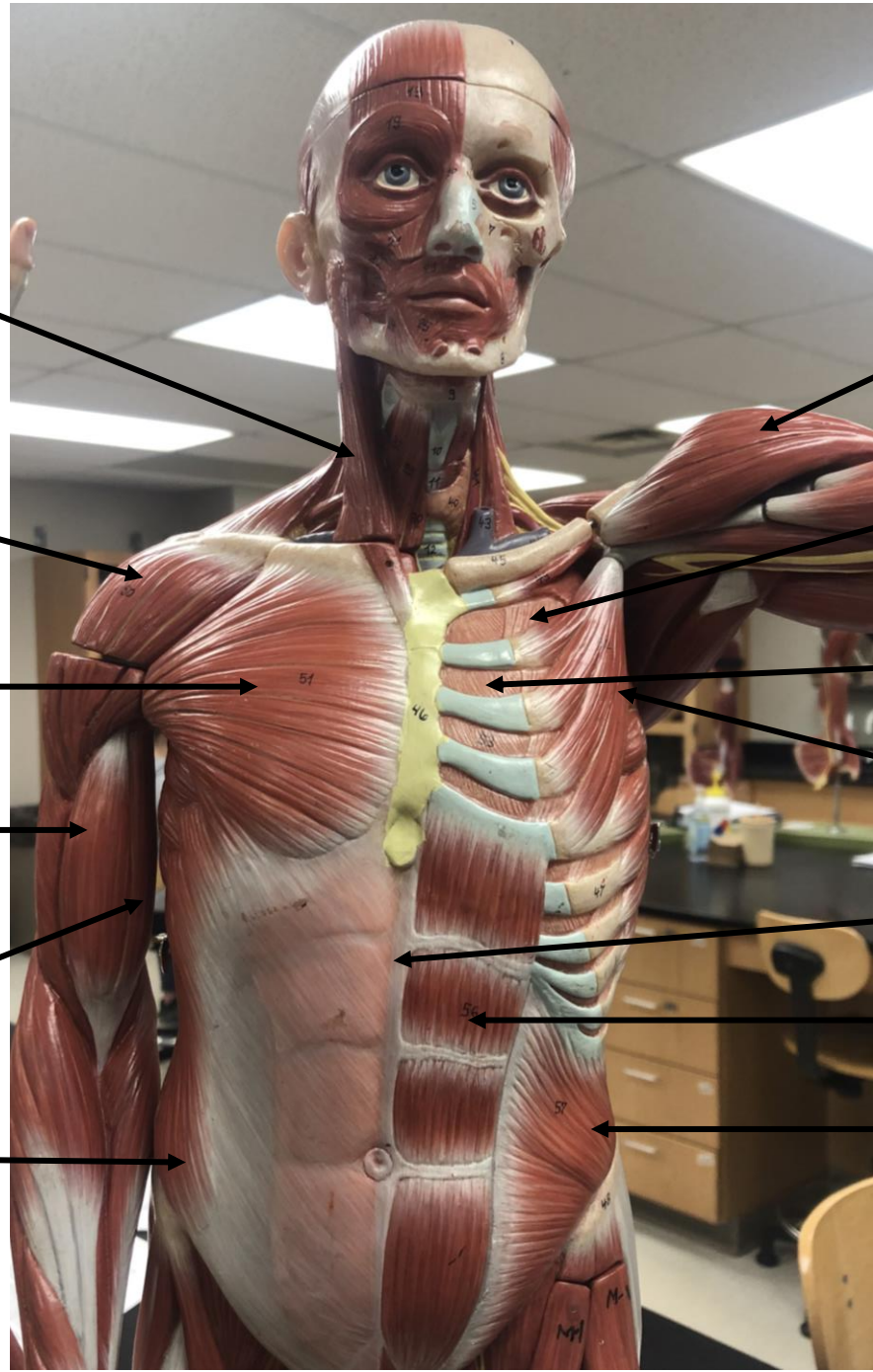
Deltoid

Pectoralis Major

Biceps Brachii- long head

Biceps Brachii- short head

External Oblique



Deltoid

External Intercostals

Internal Intercostals

Pectoralis Minor

Linea alba

Rectus Abdominis

Internal Oblique

Biceps Brachii

Deltoid

Trapezius

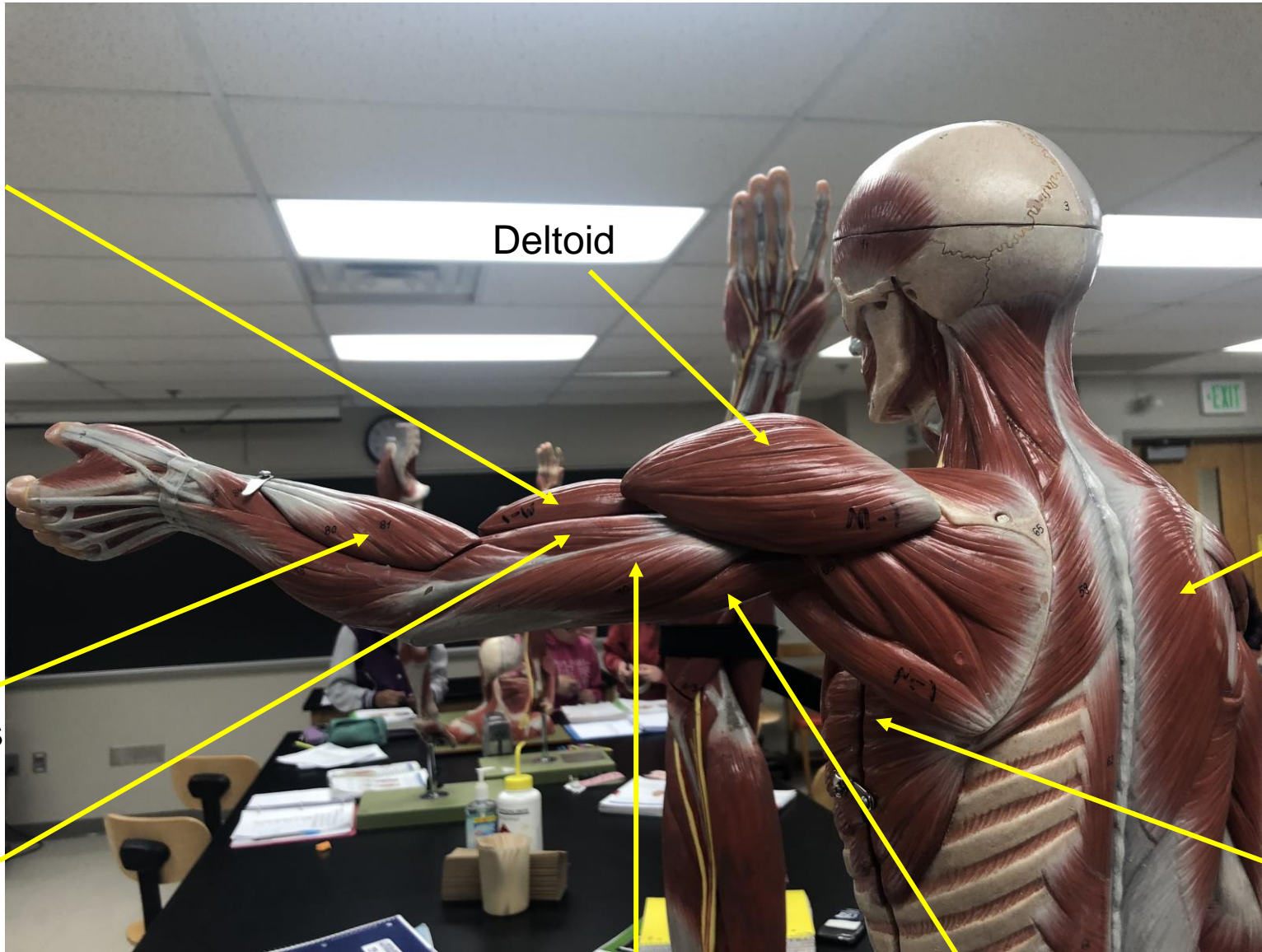
Brachioradialis

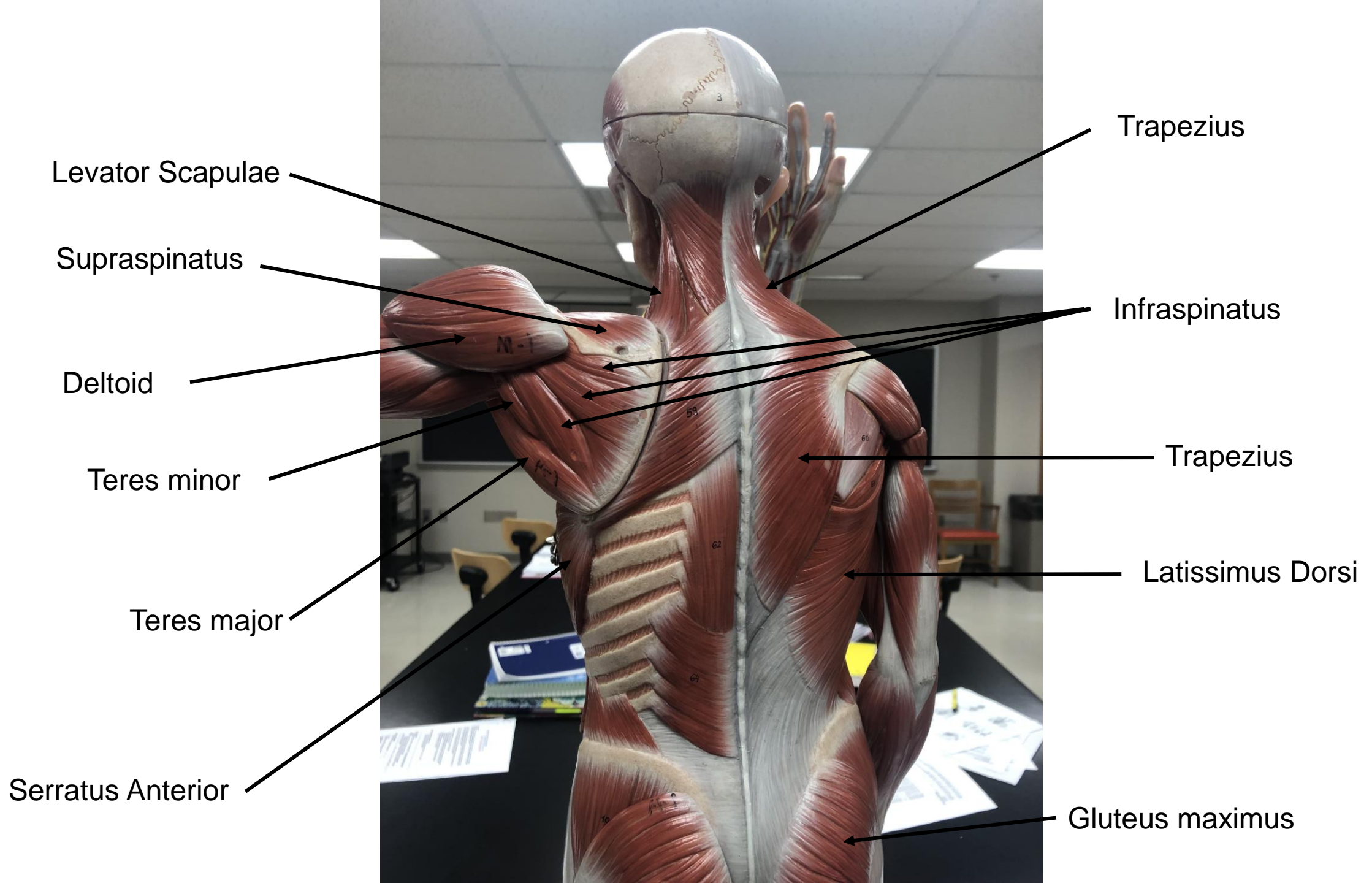
Brachialis

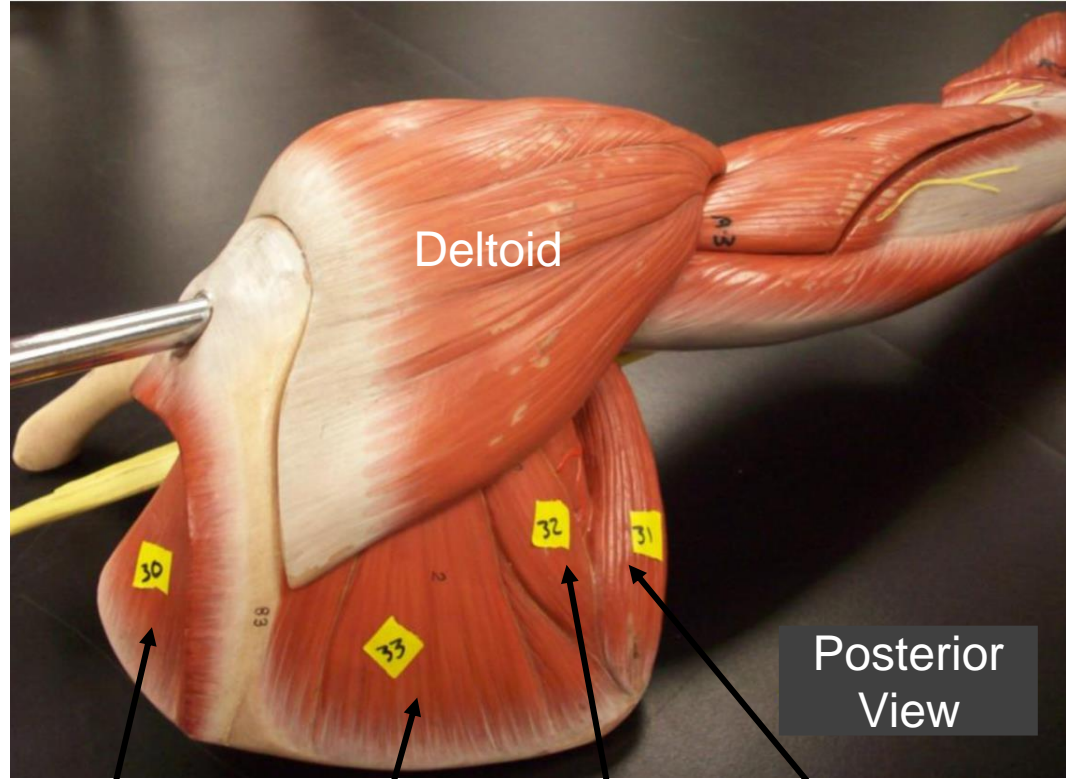
Serratus Anterior

Triceps Lateral head

Triceps Long head





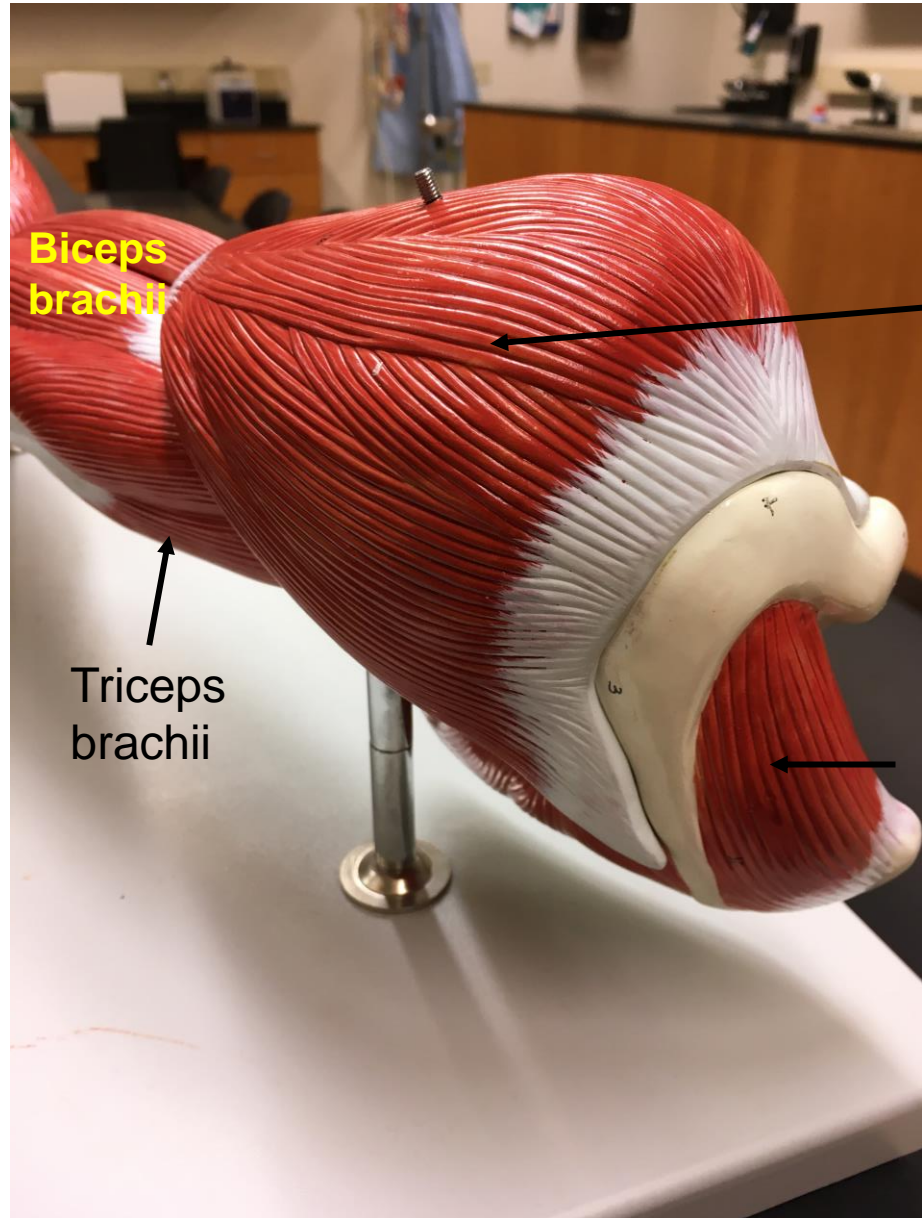


Supraspinatus

Infraspinatus

Teres minor

Teres major

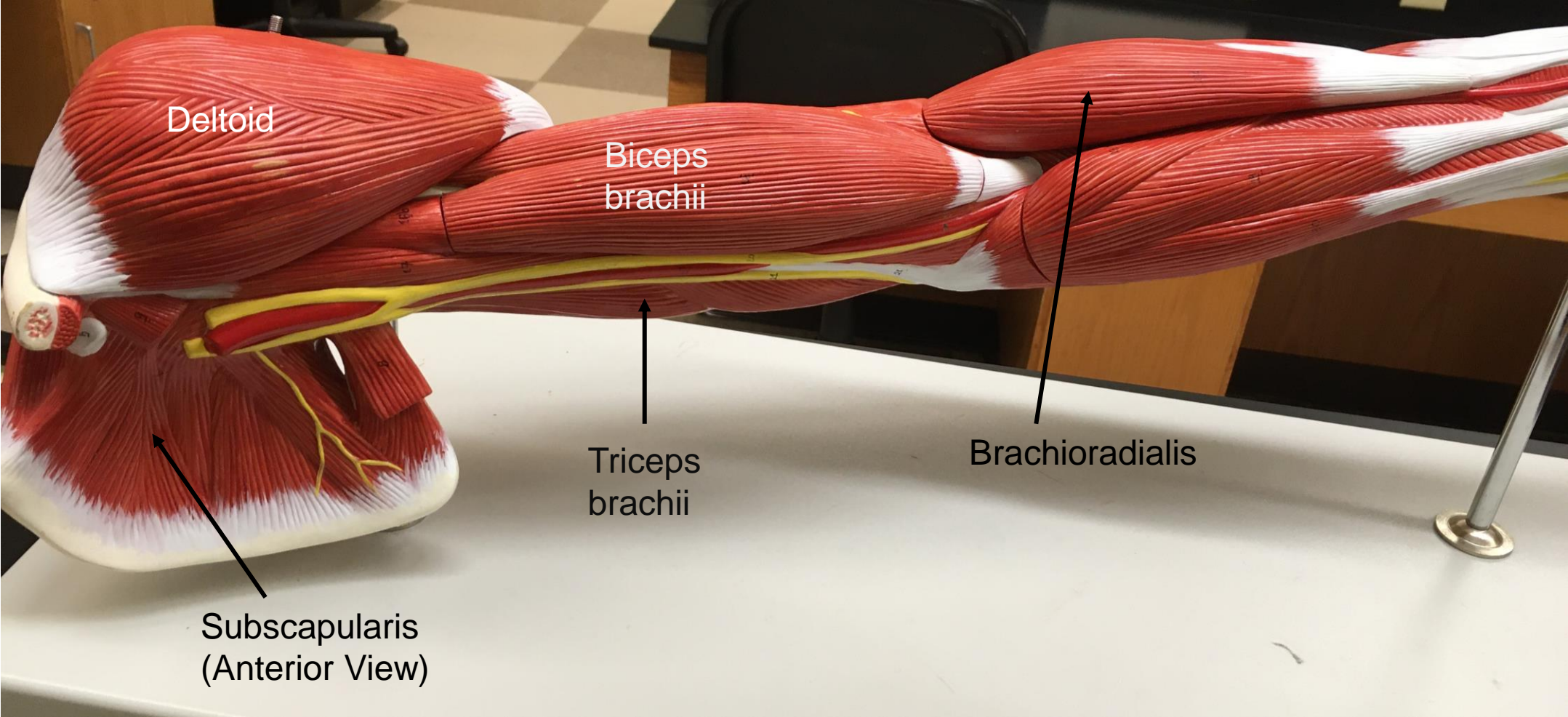


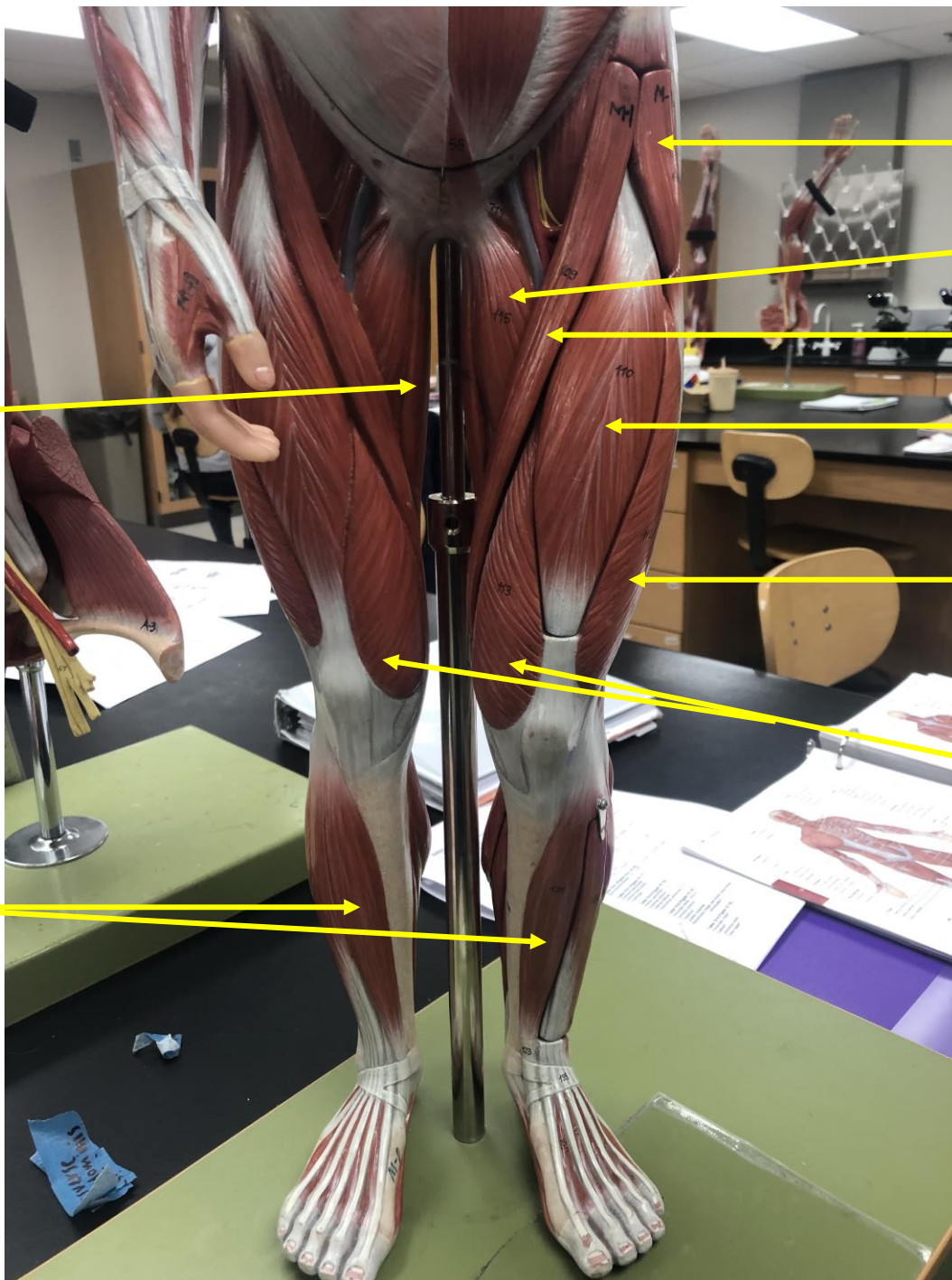
Biceps brachii

Triceps brachii

Deltoid

Supraspinatus





Tensor Fasciae Latae

Adductor Longus

Sartorius

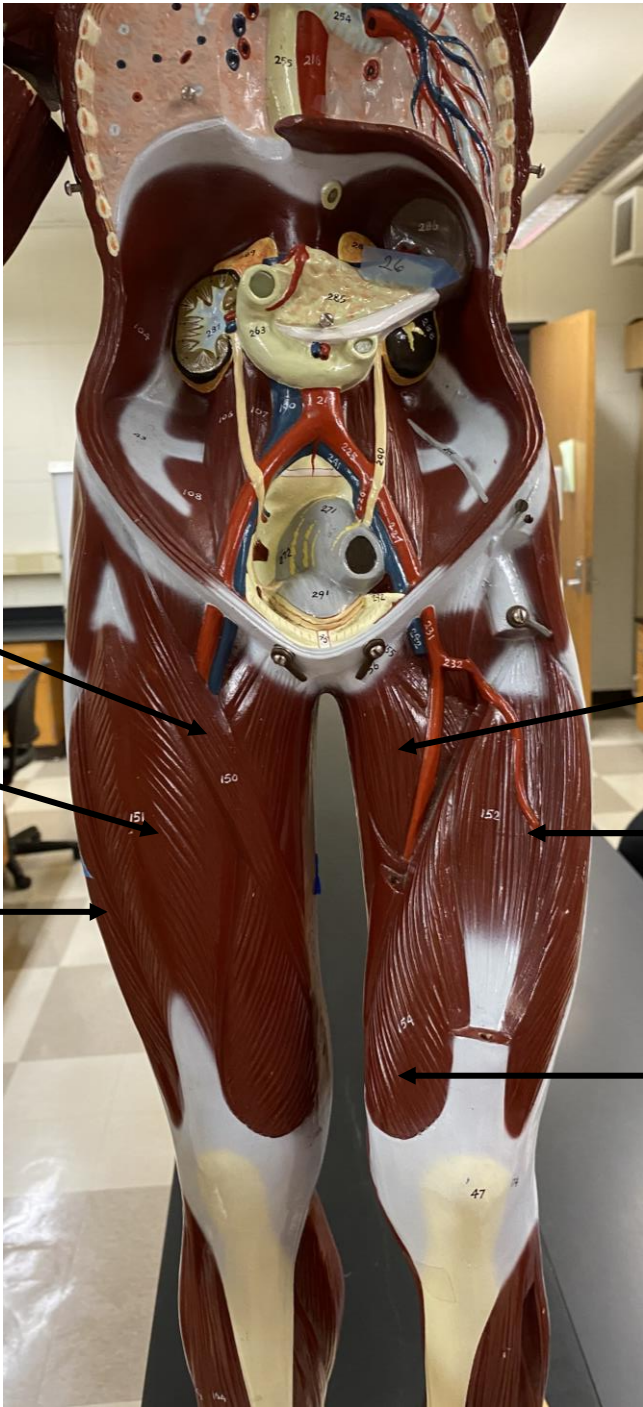
Rectus Femoris

Vastus Lateralis

Vastus Medialis

Gracilis

Tibialis Anterior



Sartorius

Rectus Femoris

Vastus Lateralis

Adductor Longus

Vastus intermedius
Rectus femoris removed

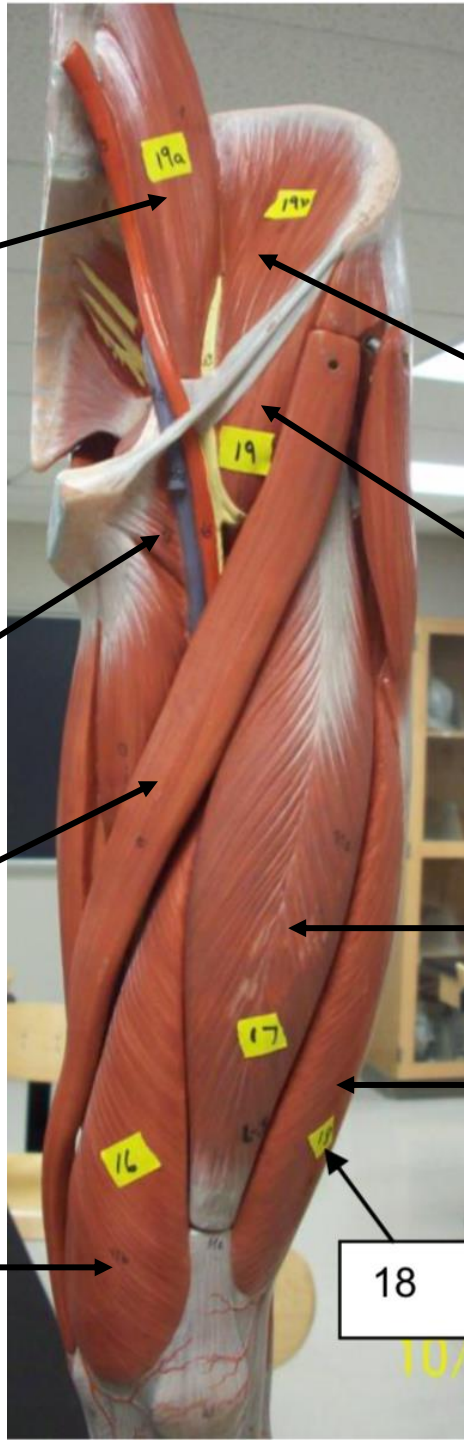
Vastus Medialis

Psoas
Major

Pectineus

Sartorius

Vastus
medialis



Iliacus

Iliopsoas

Rectus
femoris

Vastus lateralis

18

Medial
View

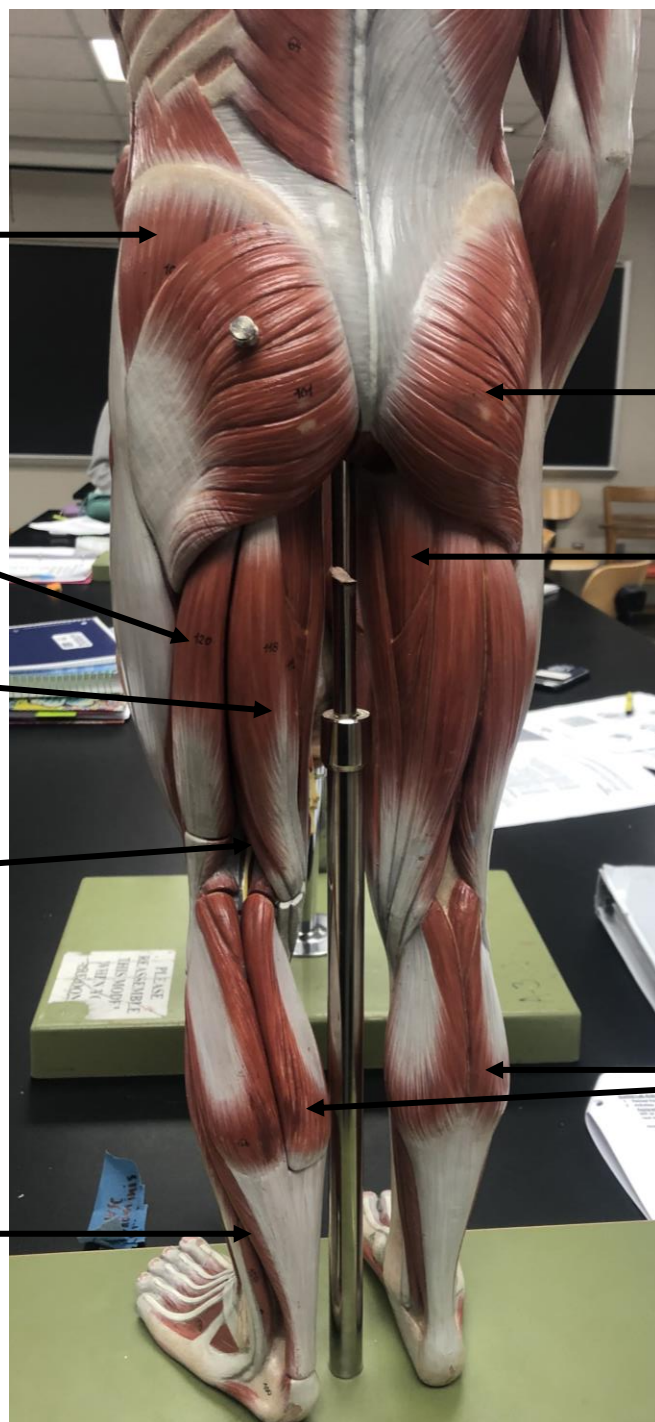
Adductor Magnus

Gracilis

Adductor Longus

Sartorius





Gluteus
Medius

Biceps Femoris

Semitendinosus

Semimembranosus

Soleus

Gluteus Maximus

Adductor Magnus

Gastrocnemius